



# PORTLAND'S *Rain* OF GLASS, INC.

A non-profit organization formed to stimulate interest in collectible glass and to provide educational resources and events for the members and the community at large.

## FEBRUARY

WHERE: Rose City Park United  
Methodist Church

5830 NE Alameda  
Portland, OR 97213  
(Southeast side of  
NE Sandy Blvd.)

WHEN: Tuesday,  
February 15, 2011  
6:30 to 9:00 p.m.

GREETERS: Dick  
and Gyrid Towle  
(Come early to  
set up—6:00 p.m.)

**New Location—this month only—2 blocks east of the Masonic Friendship Center—on the corner of NE 59<sup>th</sup> and Alameda—map inside.**

## SPECIAL: Treasures from the 2011 Show

*Show off your fabulous finds from this year's Rain of Glass Hillsboro Show! What did you buy? Come share it with us.*



**PATTERN OF THE MONTH:**  
"CROCUS," Made by Hall China,  
presented by Carole Bess White

*Pictured at left are a Hall China Crocus pepper shaker and a medium serving bowl.*



**HOSPITALITY:**  
February Committee  
listed on page 2

**BOARD MEETING:** Tuesday,  
February 8, 2011,  
at the Friendship Masonic  
Center, 7:00 p.m.  
**ALL MEMBERS WELCOME**

### UPCOMING EVENTS

#### FEBRUARY

5 – Junk Salvation Vintage Flea Market, Washington County Fairgrounds, Hillsboro

6 – Picc-A-Dilly Flea Market, Lane County Fairgrounds, Eugene

5-6 – Palmer/Wirfs Puyallup Show, Puyallup, WA

6 – Polk Flea Market, Polk County Fairgrounds, Rickreall

11-21 – Lincoln City Antique Week, City-Wide Antique Store Sales, Lincoln City, all week, 9-5 p.m.

12-13 – Ocean Shores Antique & Collectibles Show, Convention Center, 120 W. Chance A La Mer Ave, Ocean Shores, WA, Sat. 10-5, Sun. 10-4

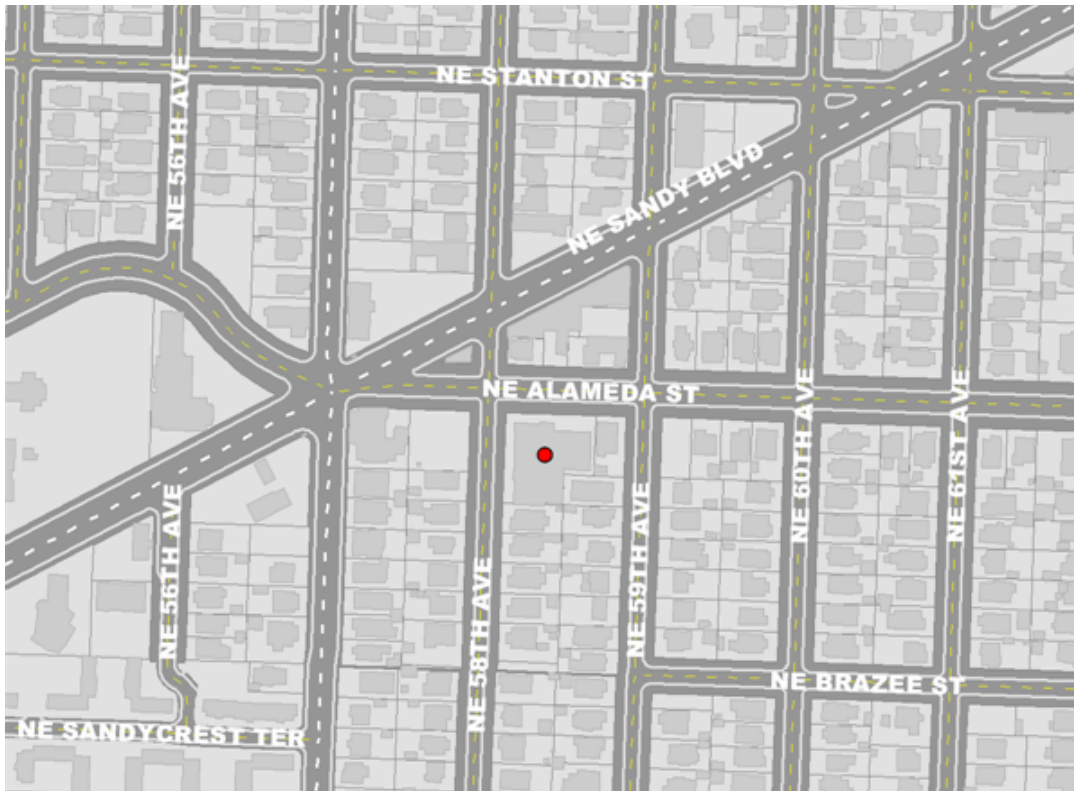
13 – Salem Collectors Market, Salem Armory

26 – Green River Depression Glass Show, Kent Commons, Kent, WA

26-27 – Greater Portland Postcard, Stamp and Collectible Paper Show, Kliever Armory, 10000 NE 33<sup>rd</sup> Ave.

Visit the Portland's Rain of Glass Website for more interesting Club news:  
[www.rainofglass.com](http://www.rainofglass.com)

**Mailing Address:**  
Portland's Rain of Glass  
C/O Friendship Masonic  
Center, 5626 N.E. Alameda  
Street, Portland, OR, 97213



**Rose City Park United Methodist Church  
5830 NE Alameda, Portland, OR 97213**

**NEW MEETING LOCATION FOR FEBRUARY**

Did you notice the lack of heat at the January club meeting? It wasn't your imagination--the furnace was disabled. The Friendship Center is getting a new furnace, and it will be completely rewired as well. More outlets in the kitchen—hooray!! It will go dark on February 14, just one day before our meeting, and the lights won't come back on until the end of the month.

We asked the Center manager to recommend a meeting hall, and he suggested we ask the nice folks at Rose City Park United Methodist Church. The answer was “yes,” so we will have our meeting there. There is a large parking lot on the corner of N.E. 58th and Alameda, and the church is between 58th and 59th on Alameda. You can see the church from the Friendship Center porch, and vice versa.

**MEMBERSHIP**

Membership welcomes two New Members:  
Wes Risher and Barb Larson

Congratulations to Members who have earned a \$5 Glass Bucks for bringing in new Members:/ Barbara Deitz for Barb Larson and Rose Mary Joslin for Dede Joslin

Bring your friends! Bring your acquaintances! Bring your relatives! When they join PROG, You earn \$5 in Glass Bucks No Limit!  
Direct Membership inquiries to Joi Shervey,  
Membership Chair Home 503.661.6777  
joisfun@comcast.net

\*\*\*\*\*

*In case of severe weather, please call Carole White's cell number, 503-901-0505 for updated information.*

**HOSPITALITY**

For the February General Meeting, the following members will be setting up and providing the refreshments as well as cleaning up:

- Barb Larson - Dessert
- Barbara Dietz - Undecided
- Mavis Case & Richard Cox- Crackers & Cheese
- Diana Jones - Veggie or Fruit Tray
- Mary Ann Specht - Undecided

Thank you!  
Mariam Morehead

# ALFA PATTERN

## with KATE FULLER



In 1897, the Bryce brothers and J.B. Higbee opened a glass factory, the Bryce Higbee Company. J.B. Higbee died in 1906, but the factory continued to operate until 1907 when the Monongahela River flooded it. Later that year the J.B. Higbee Company was opened by Higbee's son Orlando (Ollie) and a partner and operated until 1918. They introduced 28 new glass designs during their years of operation, and Alfa was their first. Ollie started using the bee logo with "HIG" in its body.

In 1919 Ira Clark, a sales rep for J.B. Higbee, went to work for the New Martinsville Glass Company and took some Higbee molds with him, including Alfa.

So Alfa was produced by the J.B. Higbee Company and the New Martinsville Glass Company, not by the Bryce Higbee Company.

Alfa is a fancy, intricate pattern designed to imitate cut glass. S.T. Millard's book *Goblets II* lists the pattern as Alfa, Rexford, Euclid and Boylen. Rexford is the best-known name now. A reference book lists 63 pieces of Alfa, but Kate knows there are unlisted pieces because she has one—a card receiver.

The line included several different comports, one covered and at least 13 others from a small jelly to a very large one. One is called a sweetmeat. Thanks to Ed Martin for looking up "sweetmeat" online--it is a candy, crystallized fruit or cake. There are three sizes of plates, including one that is 10" in diameter and which one author calls a dinner plate. However, glass dinner plates were not made until the 1920's, so perhaps this one is meant to be a serving piece.

There is an ice cream cup, which we might call a punch cup, a celery vase and a flat celery, and a syrup pitcher. There are two different sizes of cake stands, and a wafer stand that is now called a toy cake stand. Lots of Higbee patterns did have toy sizes. The children's spooner is rounded, not straight like the toothpick holder.

*Written by Carole Bess White*

*Photos by Neal Skibinski*





## FAVORITE FINDS OF 2010

By Carole Bess White

Our January club meeting might have looked chaotic, but it was organized chaos! The Friendship Center is getting a new furnace, so we had to clear our things out of the sub basement furnace room and move them to a new storage closet elsewhere in the Center. We had several boxes of financial and other records, our shelving, pole lights, all our signs and many other supplies down there, so it was a big job.

We had planned to do it on the previous Tuesday before the board meeting, but that darn ice and snow hit just as we would have started, so we had to cancel board and put off the cleanout until club night. Thanks to those who came early to help, we got it done in time to enjoy the potluck supper provided by board members and still start the club meeting on time!

Barbara Coleman led us in a rousing round of favorite finds from last year's antiquing. We brought an amazing and varied number of treasures, including—



**Jack Bookwalter:** Walther (German) glass bowl and bird flower frog from an auction.

**Al & Carol Carder:** Saturn vase by Pilgrim Glass—one of only a couple made because they broke in the annealing oven—Al paid \$125 for it at the factory and then found another one at Expo; Old Morgantown cut mimosa footed console bowl, clear with blue foot.



**Barbara Coleman:** Cambridge Azurite console bowl and ball candlesticks from eBay; Made in Japan cat salt and pepper she calls "Pumpkin and Sparkle" for her own two cats, a gift from Gyrid Hyde-Towle.



**Jewell Gowan:** Fostoria orchid Paradise brocade console bowl; Fine Cut & Block celery by the Portland Glass Company of Portland, Maine, and Steuben bowl c. 1925-30, purchased from Al & Carol Carder.

**Dennis Headrick:** Heisey Spanish stem with Florentine cutting by the Krall brothers, the only ones with the skill to do it, original cost \$6.25 in 1935—more than \$100 in today's dollars. The Heisey family used the pattern for their "good" stemware. Dennis purchased it for \$25 from a lady who found it at a garage sale; Heisey Sparrow, from the Lafayette Antique Mall, incorrectly marked as "Fostoria" \$10 and bought at a 25% discount sale, but it's worth about \$45.

**Sandra James:** Baccarat blue bird figurine from Eisenhower Thrift Store in Palm Desert.



**Ed & Sandra Martin:** perfume bottle with orange and butterscotch applied glass decoration from a garage sale; amber glass koala flower frog made by Walther for the Australian market and green glass lady pedestal and figurine made by Walther from the same auction as Jack's koala.

**Ron & Donna Miller:** c. 1880 Pleat and Panel covered comport purchased from a neighbor.

**Sandra Millius:** Log Cabin comport by Central Glass Company needing a roof but it is old because it has the rope door handle; Mexican glass "Our Lady of Guadalupe" iridized glass bottle; 1920's porcelain Katzhutte "Europa and the Bull" figurine from an estate sale.

**Wes Risher:** Morgantown Tiki champagne made for Trader Vic's restaurants, from eBay for \$20 plus shipping.

**Jackie Searles:** Rock Crystal cutting on Empress blank piece from Goodwill.com; Fostoria 2470 console bowl with crystal top and wisteria base.

**Joi Shervey:** Pyrex Ovenware divided casserole in metal carrier from a shop in Winston, Oregon.



**Neal Skibinski:** Herend Hungarian porcelain cigarette urn from the Albertina Kerr Thrift Shop.

**Janice Wallace:** Slightly sun-colored Heisey "icicle" decanter in the Ridgeleigh pattern. (Vintage glass that contains manganese will turn purple when exposed to direct sunlight.)

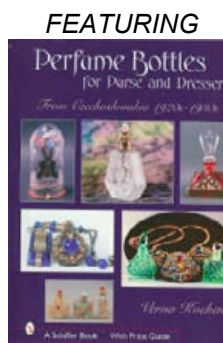


**Carole Bess White:** Paden City cake stand and Cambridge Cleo sandwich server from Expo; figural Frenchman glass decanter and shots, Tiffin satin glass covered candy with silver geese overlay and Tiffin satin glass vase with Asian silver overlay from eBay; ebony Barcelona vase with silver overlay by Diamond Glass Company and Morgantown vase, gifts from Neal Skibinski.

**DON'T MISS THIS!!**

# 2011 Glass Collectors

## ◆ CONVENTION ◆



SIGNED BEAUTIES OF COSTUME JEWELRY  
MARCIA "SPARKLES" BROWN

MEXICAN GLASS  
EASON EIGE

GLASS PERFUME BOTTLES  
VERNA KOCKEN

BOXED CHILDREN'S GLASS DISHES OF THE DEPRESSION ERA  
BEA MARTIN

A CENTURY OF SANDWICH GLASS  
AND

TREASURES OF MT. WASHINGTON & PAIRPOINT GLASS  
FROM THE NEW BEDFORD MUSEUM OF GLASS  
KIRK NELSON

**PLUS ACTIVITIES INCLUDING 2 BIG AUCTIONS**

LOTS INCLUDE:

**7-DAY STAY IN LAKE TAHOE—GLASS—ANTIQUES—COLLECTIBLES—MUCH MORE**

SILENT AUCTION MAY 26

VIEWING 5:00 P.M. ♦ FIRST CLOSING 6:00 P.M.

ORAL AUCTION MAY 27

VIEWING 5:30 P.M. ♦ BIDDING 6:30 P.M.

**NO BUYER'S PREMIUM!! OPEN TO THE PUBLIC!!**

**MAY 26 - 27 - 28, 2011**

THE GROTTO CONFERENCE CENTER ♦ 8840 NE SKIDMORE STREET ♦ PORTLAND OR 97220

INFORMATION & RESERVATIONS:

[www.rainofglass.org](http://www.rainofglass.org)

**503-286-5224**



Photos by Neal Skibinski

## **PROG Antique and Collectables Sales Committee**

Hi all;

I would like to announce the start of a new committee. "PROG Antique and Collectable Sales Committee" (For the lack of a better name at this point.)

In summary Hollywood Antique's Mall (Tina West) has agreed to donate a display cabinet to PROG to sell antiques and glass for a commission of 15%. The concept is that PROG could sell donated items and consignment items in the mall space and all profits would go to the PROG general fund.

We need a Captain for the committee and several others to receive donation and consignment items and maintain the Mall Space. If you want to become more involved with your club and help support the club at the same time please volunteer to become a member of this new committee. It really should be a lot of fun having the space and being able to promote PROG from the antique mall. This will help our membership enrollment and provide additional income for the club.

Please email me or give me a call if you would like to be a member of this committee and help PROG continue to grow.

Thanks for everyone's continued support of PROG.

Ed Martin  
Development Director  
ensmartin@comcast.net  
(503) 502-4455



**2011 RAIN OF  
GLASS SHOW &  
SALE**  
**See next month's  
newsletter for a  
complete report!!**

